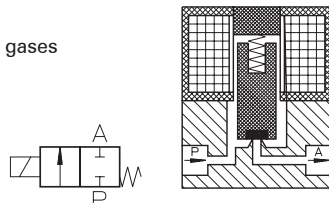


Type MA 721

2-way solenoid valve
direct actuated, NC
(normally closed)



Application
Neutral liquids, gases
and vapors



Type/ Order No.	Orifice [mm]	Port size	Pressure range [bar]		kv-value [m³/h]	Weight [kg]
			AC	DC		
MA 721-022	1,0	G 1/8	0 - 20	0 - 12	0,03	0,190
MA 721-025	1,6	G 1/8	0 - 16	0 - 10	0,06	0,190
MA 721-028	2,2	G 1/8	0 - 10	0 - 6	0,11	0,190

Sealing material: **P** (NBR) **E** (EPDM) **V** (FPM)

Body material: Brass
 Inner parts: Stainless steel (1.4105)
 Mounting direction: Free, preferred upwards
 Max. ambient temp.: 50 °C
 Viscosity of the medium: max. 21 mm²/s (3 °E)
 Static pressure: max. 30 bar
 Standard voltage: DC: 24, 12 V
 AC: 230 V, 115 V, 42 V,
 24 V, 12 V (50 or 60 Hz)

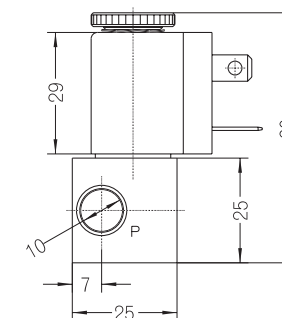
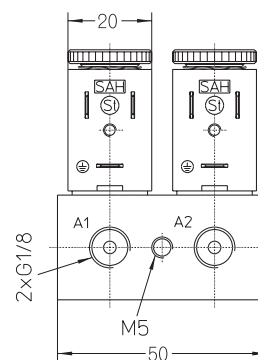
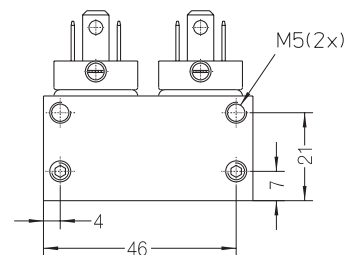
Power consumption: 5 VA / 5 W
 Voltage tolerance: -15%... +10%
 Duty cycle: 100%
 Operating frequency: max. 1000/min
 Degree of Protection: IP 54 (EN 60529)

Other configurations upon request



accessories

	connection bush	hose nozzle	plug
NBR	530 000 550	530 000 551	530 000 552
FPM	530 000 757	530 000 759	530 000 758
EPDM	530 001 120	530 001 121	530 001 122



The right to modification is reserved



Dimensions in mm